

HOUSING AND COMMUNITY SAFETY ADVISORY COMMITTEE

26 March 2015 at 7.00 pm

Conference Room, Argyle Road, Sevenoaks

AGENDA

Membership:

Chairman: Cllr. Ms. Lowe Vice-Chairman: Cllr. Mrs. Clark
Cllrs. Ayres, Mrs. Ayres, Ms. Chetram, Mrs. Cook, Eyre, Gaywood, Mrs. George, Mrs. Parkin,
Raikes and Towell

Pages

Contact

*Guide Times

Apologies for Absence

- | | | | | |
|--------|------------|---|-----------------|--|
| | 1. | Minutes
To agree the Minutes of the meeting of the Committee held on 10 February 2015, as a correct record. | (Pages 1 - 4) | |
| | 2. | Declarations of Interest
Any interests not already registered | | |
| | 3. | Actions from Previous Meeting (if any) | (Pages 5 - 6) | |
| | 4. | Update from Portfolio Holder | (Pages 7 - 8) | Cllr. Ms. Lowe |
| | 6. | Report on Health | (Pages 9 - 10) | Cllr. Mrs. Cook |
| 7.15pm | 7. | Older/Vulnerable people update | | Cllr. Mrs. Parkin |
| 7.45pm | 8. | Community Safety Strategy & Action Plan 2015-16 | (Pages 11 - 44) | Kelly Webb
Tel: 01732227474 |
| 8.05pm | 9. | Joint Working Group with Planning | | Cllr. Mrs. Ayres,
Cllr. Mrs. Parkin |
| 8.55pm | 10. | Work Plan | (Pages 45 - 46) | |

EXEMPT ITEMS

(At the time of preparing this agenda there were no exempt items. During any such items which may arise the meeting is likely NOT to be open to the public.)

To assist in the speedy and efficient despatch of business, Members wishing to obtain

factual information on items included on the Agenda are asked to enquire of the appropriate Contact Officer named on a report prior to the day of the meeting.

Should you require a copy of this agenda or any of the reports listed on it in another format please do not hesitate to contact the Democratic Services Team as set out below.

For any other queries concerning this agenda or the meeting please contact:

The Democratic Services Team (01732 227241)

HOUSING AND COMMUNITY SAFETY ADVISORY COMMITTEE

Minutes of the meeting held on 10 February 2015 commencing at 7.00 pm

Present: Cllr. Ms. Lowe (Chairman)

Cllr. Mrs. Clark (Vice Chairman)

Cllrs. Ayres, Mrs. Ayres, Ms. Chetram, Mrs. Cook, Eyre, Gaywood, Mrs. George, Mrs. Parkin and Raikes

An apology for absence was received from Cllr. Towell

Cllrs. Ball and Fittock were also present.

27. Minutes

Resolved: That the Minutes of the meeting of the Committee held on 8 October 2014 be approved and signed by the Chairman as a correct record.

28. Declarations of Interest

No additional declarations of interest were made.

29. Actions from Previous Meeting

There were none.

30. Update from Portfolio Holder

Members noted the Portfolio Holder's report. In response to a question concerning the meeting with the West Kent licensing partners to examine closer, more cost effective partnership working, she responded that Tandridge District Council seemed very interested in joining the Partnership, if they did join this could be accommodated within existing staffing levels. Swale Borough Council were more tentative.

With reference to the meeting with the Police & Crime Commissioner she advised that Ann Barnes had wanted to know how the new policing structure was bedding down in the District, to which she had given positive feedback and had thanked her for the money for the ANPR (Automatic Number Plate Recognition) cameras. District Area Commander, Tim Cook added that the budget had been approved and sites identified and that the cameras would be in place by the end of March 2015.

31. Referrals from Cabinet or the Audit Committee

There were none.

Agenda Item 1

Housing and Community Safety Advisory Committee - 10 February 2015

32. Strategic Assessment for Community Safety and Action Plan

Police Chief Inspector, Tim Cook and the Community Safety Manager gave a [presentation](#) on the Strategic Assessment for Community Safety and Action Plan. This strategic assessment was produced using data for the period December 2013 – November 2014 unless otherwise stated (for example crimes and Anti Social Behaviour were April-November 2014). Data was collated from partner agencies of the Community Safety Partnership, resident surveys/panels and PACT meetings. The 8 priorities for the 2015-16 Sevenoaks District Community Safety Strategy & Action Plan.(running April – March) had been identified as: Domestic Abuse; Burglary; Anti Social Behaviour including Environmental Substance Misuse; Vehicle Crime; Road Safety; Shoplifting; and Youth Issues.

It was confirmed that modern slavery would be covered under domestic violence and safeguarding.

Action 1: The Community Safety Manager to circulate the Kent wide comparative data on population increase.

33. Rural Crime

The Chairman welcome PC Daphne Allen from the Kent Rural Liaison Team who had won the [NFU Mutual Country Crime Fighters Awards 2015](#), and gave a short presentation on the work of the team including a demonstration of various snares.

34. Changes to Government Guidance on Planning Obligations - Implications on SDC's Affordable Housing Policies

The Planning Manager presented a report which advised that the Government had recently published changes to the National Planning Practice Guidance and a written ministerial statement was issued on planning obligations. In most areas, contributions to affordable housing would not now be sought from developments of 10-units or less. In designated rural areas, local authorities could choose to seek financial contributions on developments of 6-10 dwellings in designated rural areas. In addition, where developments involved the conversion or demolition of existing buildings the contribution would be proportionate to the net increase in floorspace. Therefore, developments that did not increase the amount of floorspace on a site would not have to make an affordable housing contribution. These changes would have a significant impact on the Council's ability to secure the delivery of affordable housing. At present there was not considered to be any opportunities for the Council to 'work-around' these changes to national policy. As a result, it was considered that the Council should lobby the Government to rescind or amend these policy changes.

A [briefing note](#) by the Housing Policy Manager had been circulated and was tabled for information on the Starter Homes initiative from which the Chief Housing Officer highlighted some key points.

Public Sector Equality Duty

Members noted that consideration had been given to impacts under the Public Sector Equality Duty.

Resolved: That it be recommended to Cabinet that

- a) the Council lobby Government to rescind or amend recent changes to national policy on the use of planning obligations for securing affordable housing; and
- b) the Council seeks financial contributions to affordable housing consistent with the percentages applied in Core Strategy policy SP3 on developments of 6-10 units in designated rural areas in the District.

35. Work Plan

The work plan was noted. It was agreed to add a HERO Update, Review of Disabled Facilities Grant process and Dog Fouling to the summer meeting; and an Under Occupation Officer Update to the Autumn meeting.

THE MEETING WAS CONCLUDED AT 8.55 PM

CHAIRMAN

This page is intentionally left blank

ACTIONS FROM THE MEETING HELD ON 10.02.15

Action	Description	Status and last updated	Contact Officer
Action 1	The Community Safety Manager to circulate the Kent wide comparative data on population increase. (Minute 32)	Email circulated to Committee on 27.02.2015	Kelly Webb

This page is intentionally left blank

Housing & Community Safety Advisory Committee

26 March 2015

Portfolio Holders Report

Housing Strategy/Policy and Housing needs

I met with Berkeley Homes to see proposals for the new development at 98-116 London Road and to argue you a case for more affordable homes. The previous application had 11 affordable homes agreed, with the new application down to zero, with the developer claiming viability due to issues such as the new underground car park.

I attended the Chartered Institute of Housing (CIH) South East's Housing Conference in Brighton with the Chief Housing Officer: Pat Smith on Wednesday 4 March.

The Landlords Forum was held on Monday 23 March. Private landlords are increasing becoming an important way for the District to provide accommodation for people and avoiding Bed and Breakfast.

Attended the Ryewood (West Kent Cold Store) topping out ceremony on Tuesday 24 March.

There is a possibility that HERO could be replicated in Medway.

We have drafted a letter, that the Leader has signed, and we have sent it to the government to ask if Sevenoaks can be exempted from the recent planning regulations that will seriously impact on our affordable housing contributions.

Community Safety

Positive press coverage was achieved in the Sevenoaks Chronicle as a result of the Council's e-safety poster competition that was aimed at Key Stage 2 (ages 7 to 11) children across the district. Over 100 entries were received that were split into two age groups: 7 and 8 years; and 9 to 11 years old. The judges consisted of the Council's Chairman: Cllr Jill Davison, the Youth Police & Crime Commissioner: Kerry Boyd and the Editor of the Sevenoaks Chronicle: Gabriel Shepherd.

Prizes were awarded by the Council Chairman and Youth Police & Crime Commissioner on Safer Internet Day itself (Tuesday 10 February) and coverage followed on Thursday 12 February.

Les Ayres and I represented the District Council at Kent Police's E-Safety workshop on Tuesday 3 March.

Environmental Health/Licensing

The number of abandoned dogs finding their way into the council's kennels is increasing. SDC are trying to combat this by offering pet micro-chipping for just £10 so that dogs can be returned to their owners much faster.

Youth

Responded with local members to the proposed closure of the Furness School in Swanley.

Agenda Item 4

Taken an active part in the Girl Guiding's 'Girls Matter – Hear our Voice' campaign to encourage young women to involve themselves in this year's elections. Spoke at Brownie, Guide and Senior Section meetings about politics, the role of politicians and the importance of women taking part.

Brownies took part in a debate in the SDC Council Chamber on Monday 2 March with live Tweets from their PR officer and a written account which will be posted up on their blog.

A Report to a Meeting of the Housing and Environment Advisory Committee.

The key objective in creating a Health Liaison Board lies in its title. It is a committee consisting mainly of Members who have an active involvement in health related issues who can bring that knowledge and information back to the Council, flagging up any relevant issues or concerns.

Over the last two years Members have attended a considerable number of external meetings and have provided valuable updates on the Dartford, Gravesham and Swanley Clinical Commissioning Group (CCG), and the West Kent CCG, KCCs Health Overview and Scrutiny Committee (HOSC), Patient Participating Groups (PPGs), the West Kent Health and Wellbeing Board, the Care Quality Commission (CQC) and the Kent Health Watch. Members have also attended a variety of seminars such as 'Better Care Together' and Dementia Friendly Forums as well as a number of AGMs including that of the South East Ambulance Trust. There have been reports from Officers on a range of matters two of which have been the Council's Mind the Gap Health Inequalities Action Plan and most recently the Care Act 2014 relating to adult health and social care which could have a significant impact for the Council not least on the Housing department.

Some of the obvious concerns raised have centred around obesity, 50% of older people will be obese within the next 25 years, dementia, again exacerbated by an ageing population and an increase in incidents of autism. These issues alone will have a major effect on budgets and on the future delivery of health care. To help counteract the expected shortfall in provision, communities will need to play a much greater supporting role and individuals will be expected to take more responsibility for their own health.

Problems caused by bed blocking, the inadequacies of the Hospital Transport service and underperforming Children's Services with specific reference to Spring House in Sevenoaks were raised. CAMBS, (Children and Adult Mental Health Services) also came under the spot light, following the award of the new contract initial interviews and diagnosis were taking up to 2 years to be completed. Things have improved but more still needs to be done. It had been hoped that a representative would attend the February meeting of the Board but at the last moment they couldn't make it.

The Work Plan is themed around the Council's Community Plan to include subjects such as improving mental health and wellbeing, supporting older people to live safely and independently in their own homes and giving young people the best start in life. It also provides a platform for invited experts from the statutory and voluntary sectors to make presentations to the Board. Speakers have included Katie Skinner talking on Autism Spectrum Disorder, specialist support for drug and alcohol misuse was addressed by the Kenward Trust and Carers First attended twice to discuss support for those involved with coping with Alzheimer's and Dementia and again to talk about the pressures placed on young carers. Chairmen from several PPGs have also attended meetings to express concerns raised by patients and to explore ways in which the Council could offer support and exert some influence.

This is just a brief report on the activities of the Board but over the last two years it has become increasingly clear that factors which impact on the health and wellbeing of our residents can be identified in almost all the services which this Council provides. The importance of integrating health and wellbeing with housing, leisure and indeed the arts is now being increasingly recognised by both

Agenda Item 6

health bodies and Government. As SDC prepares for a new four year term perhaps now is the appropriate time to consider bringing these three elements together under one Portfolio Member and one Advisory Committee.

Alison Cook

Chairman Health Liaison Board

COMMUNITY SAFETY STRATEGY & ACTION PLAN 2015-16

Housing & Community Safety Advisory Board - Thursday 26 March 2015

Report of Chief Officer Communities and Business

Status: For Consideration

Also considered by: Cabinet – 16 April 2015

Key Decision: No

Executive Summary:

This report seeks approval for the 2015-2016 Community Safety Strategy and Action Plan. The plan responds to the community safety priorities identified in the most recent Strategic Assessment.

This report supports the Key Aims of delivering a low crime rate in the District and supporting vulnerable and repeat victims of crime and anti-social behaviour

Portfolio Holder Cllr. Michelle Lowe

Contact Officer(s) Kelly Webb x7474

Recommendation to Housing & Community Safety Advisory Committee: Members views are sought.

Recommendation to Cabinet: that the Community Safety Strategy & Action Plan for 2015-16 is approved.

Reason for recommendation: This Action Plan will determine multi-agency work undertaken in the District to reduce crime and anti-social behaviour and increase feelings of safety.

Introduction and Background

- 1 The Crime & Disorder Act 1998 places a statutory responsibility on Sevenoaks District Council, Kent County Council, Kent Fire & Rescue Service, Health, Probation and Kent Police, together with other key partners, to undertake an audit of crime and disorder in the District and co-operate in the development and implementation of a strategy and action plan for tackling local crime and disorder.
- 2 The Strategic Assessment undertaken in November 2014 identified eight Community Safety priorities for the District, in no particular order, as follows:

Agenda Item 8

- Anti-Social Behaviour (incl. environmental crime)
- Burglary (Burglary Other than Dwelling and Burglary Dwelling)
- Vehicle Crime (Theft Of Motor Vehicle and Theft From Motor Vehicle)
- Substance Misuse
- Young People's Issues
- Domestic Abuse
- Handling stolen goods (incl. Shoplifting)
- Road Safety

The Action Plan is monitored on a quarterly basis by the Community Safety Partnership, to ensure that actions are on target and are helping to meet the identified success measures.

- 3 The draft 2015-2016 Sevenoaks District Community Safety Strategy and Action Plan sets out Partnership activity aimed at addressing the above priorities.

Key Implications

Financial

- 4 The funding required to deliver the Action Plan comes from the Police and Crime Commissioner and SDC Core Budget from the core budget of participating agencies and other external funding sources as they become available. No additional District Council funding is required to deliver the plan.

Legal Implications and Risk Assessment Statement.

- 5 There are no legal issues arising from this action plan.

Equality Assessment

- 6 Members are reminded of the requirement, under the Public Sector Equality Duty (section 149 of the Equality Act 2010) to have due regard to (i) eliminate unlawful discrimination, harassment and victimisation and other conduct prohibited by the Equality Act 2010, (ii) advance equality of opportunity between people from different groups, and (iii) foster good relations between people from different groups. The decisions recommended through this report directly impact on end users. The impact has been analysed and does not vary between groups of people. The results of this analysis are set out immediately below.
- 7 There are no negative impacts – the action plan applies to all. The action plan seeks to reduce crime and anti-social behaviour and improve feelings of safety. The action plan looks at 8 priorities that have been highlighted through the strategic assessment completed in November 2014. All victims of crime and anti-social behaviour are treated equally and fairly regardless of disability, age, sexual orientation, gender reassignment, marital or civil partnership, race, gender, carer status or religion and belief.

Safeguarding Children and Vulnerable Adults.

- 8 The Action Plan makes a positive contribute to the safeguarding of children and vulnerable adults in the District.

Resource (non financial)

- 9 The Action Plan will be delivered by the Council's Community Safety Team with partner agencies.

Sustainability Checklist

- 10 A sustainability checklist has been completed and a positive impact is anticipated.

Conclusions

- 11 The Community Safety Action Plan for 2015-16 sets out Community Safety priorities for the District based on an assessment of crime and disorder and a multi-agency action plan aimed at tackling those priorities. Partner agencies are accountable for their own actions within the Action Plan and are monitored by the Community Safety Partnership.

Appendices	Appendix	Draft Sevenoaks District 2015-2016 Community Safety Strategy and Action Plan
------------	----------	--

Background Papers:	2014 Strategic Assessment of Crime and Disorder in the Sevenoaks District
--------------------	--

Lesley Bowles
Chief Officer Communities & Business

This page is intentionally left blank

Sevenoaks District

Community Safety Partnership

Annual Action Plan 2015 - 2016 DRAFT



Contents

Introduction	Page 3
Priority issues 2015-16	Page 4
Success measures	Page 6
Burglary	Page 7
Vehicle Crime	Page 9
Anti-Social Behaviour incl Environmental Crime	Page 11
Youth Issues	Page 14
Domestic Abuse	Page 16
Substance Misuse	Page 18
Handling of Stolen Goods incl Shoplifting	Page 21
Road Safety	Page 23
Glossary	Page 25
Partners	Page 26
Terms of reference	Page 27
Partnership structure	Page 28
Map of Sevenoaks District	Page 29

This publication is available in large print. For a copy call (01732 227414).

www.sevenoaks.gov.uk

If you need help communicating with us or understanding this document, we can arrange for an interpreter to help you.

Please contact us on 01732 227000 stating your language and telephone number

Action Plan 2015-16

Introduction

The Sevenoaks District Community Safety Partnership brings together all of the agencies in the District who can have an impact on crime, anti-social behaviour and the fear of crime. A list of partners is set out on page 26. The Partnership has 3 key aims. They are to:

- Reduce and detect crime
- Reduce anti-social behaviour and the fear of crime
- Strengthen community involvement

Each year the Partnership, in common with all of the Community Safety Partnerships in Kent, undertakes an assessment of crime and disorder in the District, using data provided by partners and feedback from residents. The assessment identifies the priority issues for the next year using the following rationale for each community safety type:

- Whether there is significant community concern
- Whether there is an increasing trend
- Whether it contributes to a high volume of crime
- The level of harm it causes
- How well it is performing compared with other parts of Kent and similar partnerships nationally
- Whether the Partnership can add value to the work

This Action Plan identifies where we can best work together to achieve results.

Priority Issues for 2015-16

The Strategic Assessment undertaken during the winter of 2014 has identified 8 priorities for the Partnership to tackle during 2015-2016. The data referred to in this Action Plan is based on the Strategic Assessment, which uses data between December 2013 – November 2014, unless otherwise stated. Trends in the identified priorities continue to be monitored on a quarterly basis and the first monitoring will be available in July 2015. Crime types are compared with their “Most Similar Groups” a benchmarking group set up by the Home Office, of partnerships thought to have similar characteristics.

The 8 priorities, in no particular order, are:

- Anti-Social Behaviour (including Fly-Tipping)
- Burglary (including Burglary Other than Dwelling)
- Theft Offences (including Shoplifting, Theft of Metal and Theft Offences)
- Substance Misuse
- Young People’s Issues
- Vehicle Crime (Theft of Motor Vehicles and Theft of Motor Vehicles)
- Domestic Abuse
- Road Safety

Although the Partnership’s main focus will be the 8 priorities, it will continue to monitor and plan for trends in crime and other community safety issues and address them through the Community Safety Unit’s daily briefings and other tasking arrangements in order to reduce recorded crime.

The Action Plan

The following pages set out the overall targets for the Community Safety Partnership and an action plan is linked to each priority. The Action Plan does not include details of the numerous activities already undertaken by partners, town and parish councils, the voluntary sector and others as part of their day to day work, but highlights activities in addition to core work, which partners will undertake throughout the forthcoming year. All priorities include actions around public perception and reducing repeat offenders/victims.

Funding and monitoring

Funding for the actions included within the Action Plan is available from a number of sources, including partners’ own budgets, Police & Crime Commissioner’s (PCC) funding which is allocated to district Community Safety Partnerships, Choosing Health funding and other small amounts of funding from a variety of sources, for example the Kent People’s Trust.

Regular monitoring will take place to ensure that individual projects continue to deliver positive results as well as value for money and that this Action Plan is on target.

Equalities

In preparing the action plan, issues such as equality and diversity were considered to ensure that everybody feels safe in the District.

SEVENOAKS DISTRICT COMMUNITY SAFETY PARTNERSHIP – ACTION PLAN 2015-16

SUCCESS MEASURES

All recorded crime

All Victim Based Crime reduced compared with the previous year

Anti-Social Behaviour

An improvement in behaviour achieved in 80% of cases accepted by the Anti-Social Behaviour Task Group.

75% of Anti-Social Behaviour victims satisfied with action taken.

Young People's issues

Intervention projects and positive media for young people to be maintained

The number of young people entering the criminal justice system for the first time to be reduced.

Burglary

Number of dwelling & non dwelling (shed, commercial/retail premises) burglaries to be reduced compared with the previous year

Vehicle Crime

Number of Vehicle Crimes (Theft of vehicles and Theft from vehicles) to be reduced compared with the previous year

Theft offences & handling stolen goods (incl shop lifting, theft of metal & metal offences)

The number of businesses participating in the Safer Town Scheme to be increased by 10 %

The number of exclusion/banning notices issued to be increased by 10%

Speeding incl Road Safety

Maintain the number of voluntary speed watches and Police enforcement

Substance Misuse

Substance Misuse Action Plan to be 85% on target

Domestic Abuse

The number of repeat incidents & repeat victims of Domestic Abuse to be reduced by 2%

Domestic Abuse Action Plan to be 80% on target

Burglary

Burglary is divided into Burglary Dwelling and Burglary Other offences.

Kent Police data shows that burglary offences in the Sevenoaks District have decreased by 17% (133 offences) compared with figures for same period last year (April – November 2013). The District ranks very poorly in County comparisons being the 3rd highest for Burglary Dwelling offences and 4th highest for Burglary other than Dwelling. The District has the highest rate of burglary offences in its Most Similar Group (see glossary on page 25), known as MSG.

The following wards experienced the most incidents of burglary with each ward reporting over 40 burglary offences (April 2014 to November 2014):

- Ash
- Brasted, Chevening and Sundridge
- Halstead, Knockholt and Badgers Mount
- Hartley and Hodsoll Street
- Otford and Shoreham
- Seal and Weald

Burglary Dwelling

Burglary Dwelling makes up 8 % of the total recorded crime in the Sevenoaks District. Burglary Dwelling has seen a reduction of 0.5%, compared with the same period last year, with the number of offences falling from 291 to 288. The County picture is not dissimilar, with 5 other districts reporting a decrease in Burglary Dwelling offences over the same time period. Comparative performance is poor with Sevenoaks District ranking 3rd highest in the County and highest in MSG.

Burglary Other than Dwelling (BOTD)

BOTD makes up 10% of total crime in the District (based on recorded figures for April to November 2014). The Sevenoaks District now has the 4th highest recorded crime rate for BOTD in the County and highest in the MSG.

	Priority Action	Lead Agency	Other Partners	By When	Funding
	Burglary (Dwelling and BOTD)				
1.1	Proactively target action on hot spot areas using Pred Pol data and Op Cocoon through the monthly Daily Tasking meetings	CSU	Police Housing Assoc KCC Wardens	April 2015	Existing Budgets
1.2	Help address perception of Burglary by communicating effective key messages by all front line staff to residents and Town & Parish Councils	CSU	Police KCC Wardens	April 2015	Existing Budgets
1.3	Expand role of Integrated Offender Management Unit (IOM) to help support intervention for prisoners who have received 12months or less for Burglary crimes	Probation Service	Police CSU	Sept 2015	Existing Budgets
1.4	Continue to deliver Smart Water to vulnerable and repeat victims of Burglary & Burglary other than Dwelling across the District	KCC Wardens	CSU	On-going	Existing Budgets
1.5	Through Media campaign help promote CSU and education about Burglary & BOTD through Twitter & Face book	CSU	Police Housing Assoc KCC Wardens	April 2015	Existing Budgets
1.6	North West Kent Crime Prevention Panel (NWKCPP) to attend village days/fetes across the District promoting Home Security	NWKCPP	CSU	On-Going	Existing Budgets

Vehicle Crime

Kent Police data shows Vehicle crime (which includes Theft From Motor Vehicle and Theft Of Motor Vehicle) is down 19.9% compared with the same period last year (April – November 2014). The District ranks very poorly in County comparisons at 2nd highest for Theft of Motor Vehicle and 4th highest for Theft from Motor Vehicle. The District has the 2nd highest rate of vehicle crime in its MSG.

The figure for TFMV stands at 346 for this period. This is a reduction of 23.9% (109 offences) on the same period last year. The District is the 4th worst performing area in Kent and 2nd worst in the MSG. Despite a slight reduction of 5.5% (7 offences) bringing the total number of TOMV to 119 this period, the District still ranks very poorly and comes 5th highest in the County and 2nd highest in its MSG.

The following wards experienced the most incidents of vehicle crime with each area reporting over 30 crimes (April 2014 to November 2014):

- Farningham, Horton Kirby and South Darenth
- Fawkham and West Kingsdown
- Swanley Christchurch
- Swanley St Mary's
- Swanley White Oak

Theft of a Pedal Cycle

Pedal cycle theft has had a very slight increase of 7.4% (2 offences) from 27 to 29 offences. Sevenoaks District has the lowest rate in the County and ranks lowest (best) in MSG Theft of a Pedal Cycle.

Priority Action		Lead Agency	Other Partners	By When	Funding
VEHICLE CRIME (TOMV & TFMV)					
2.1	Target beauty spot locations and work with trusts and rangers to raise awareness. Use high visibility patrols and wildlife cameras	CSU	Police National Trust KCC Wardens	April 2015	Existing Budgets
2.2	Promote Safe Plates, work with local dealerships and promote the service through PCSO surgeries	CSU	Police	May 2015	Existing Budgets
2.3	Expand role of Integrated Management Offender Unit to help support intervention for prisoners who have received 12 months or less for Burglary crimes	Probation Service	Police CSU	Sept 2015	Existing Budgets
2.4	Targeted work through the Tasking & Co-ordination Group to identify hotspot locations and be proactive in those areas; use Pred Pol data	Police	CSU	April 2015	PCC Budget
2.5	Through Media campaign help promote CSU and education about TOMV and TFMV through Twitter & Face book	CSU	Police Housing Assoc KCC Wardens	April 2015	Existing Budgets

Anti-Social Behaviour including Environmental Crime

Evidence shows that Anti-Social Behaviour (ASB) remains one of the priority issues within Sevenoaks District among residents and continues to rank highly in reported figures when compared with other issues and recorded crime within the District.

It is important to note that reported calls of ASB to the Police may or may not have also been reported to other partners so trying to establish a standardised total is difficult.

Despite the high priority of ASB, the District currently has the 2nd lowest levels in the County.

The County average has been decreasing since 2010. However the number of ASB incidents in Sevenoaks District has seen slight fluctuations during this time. The Sevenoaks District continues to maintain levels of ASB significantly below the County average.

In addition to calls to the Police, SDC has received 190 calls regarding ASB this year, which represents an increase of 47 incidents (32.9%), compared to the previous year.

The most prominent ASB issues reported to SDC are:

- Rowdy behaviour
- Nuisance Behaviour (incl Neighbour disputes)
- Intimidation/Harassment (incl neighbour disputes)

The top 3 wards for reporting anti social behaviour to the District Council were the three Swanley wards followed by Edenbridge South and West.

MOAT Homes do not have an ASB database. However, they were able to identify 'Noise' as the highest reports of ASB.

West Kent Housing received 460 complaints of ASB this year. Highest being Noise at 126 and Harassment at 116.

ASB continues to be the highest recorded incidents within the CCTV service much higher than all other crimes reported/detected.

Fly Tipping

Flytipping has seen a slight rise this year and remains one of the most prominent issues. Sevenoaks District Council Direct Services received 923 reports of fly tipping between October 2013 – September 2014. This was a 25.3% increase, 188 more reports, with 380 of them removed. It is worth noting that an increase in reports does not necessarily indicate an increase in incidents, with often more than one report per incident.

Sevenoaks District has the second lowest recorded fly tipping in Kent and that there has been a general reduction in the trend in fly tipping in the District since 2008/9. The information from Clean Kent is that one of its most prominent areas for fly tippers is in our District, Donkey Lane, Eynsford.

Abandoned Vehicles

Abandoned vehicles have seen a slight increase over the last year, with 109 reports (1 more than same period last year) being made to SDC and 7 vehicles being removed. The low proportion of vehicles removed is in the most part due to the vast majority of those vehicles reported either being driven or declared SORN (Statutory off Road Notice) and parked off-road.

Graffiti

Graffiti reports to the Council have decreased by 30.7% (12 reports) this year with 27 recorded incidents. There were 13 offensive graffiti reports between October 2013 and September 2013 all of which were removed within the 48 hour deadline set by Sevenoaks District Council.

Priority Action	Lead Agency	Other Partners	By When	Funding	
Anti-Social Behaviour Including Environmental Crime					
3.1	Increase number of prosecutions for fly tipping through camera deployment. Awareness campaigns through local Charters (modelled on Keep Britain Tidy pilots) and prioritise hotspots	KCC Clean Kent CSU	KCC Wardens PCSOs Housing Assoc	April 2015	Existing Budgets
3.2	Campaign around prevention of Cyberbullying and e-safety in schools especially around vulnerable children and adults	CSU Police	Early Intervention Team Schools Voluntary Organisations	April 2015	Existing Budgets
3.3	Good Neighbour campaign around noise, harassment. Encourage resident responsibility in speaking with their neighbours to resolve low levels issues, referrals into mediation and managing expectations for agencies in responding to clashes of lifestyles. Take joint proactive action in response to more serious cases of noise nuisance and harassment reported.	Moat Housing WKHA CSU	SDC Housing Team KCC Community Wardens	April 2015	Existing Budgets
3.4	Promote joint partnership working on the new ASB legislation	CSU	Housing Assoc Legal Teams	April 2015	Existing Budgets
3.5	Use a targeted approach to ASB concerns with KCC Community Wardens and Police Community Support Officers	CSU Police KCC Community Wardens	Housing Assoc	May 2015	Existing Budgets
3.6	Respond to ASB issues through the daily Tasking Process and report back in 100% of cases	CSU	All Partners	On-Going	Existing Budgets

Youth Issues

There has been a slight increase in the number of youth offenders (under 18 years) entering the Youth Justice System for the first time, with figures for the District rising by 14.3% from 70 to 80 offenders over the period July 2013 to June 2014. Swale and Thanet were the only other two areas with an increase. 0.7% of the total District population of 10 to 17 year olds are recognised as youth offenders, this is an increase on last year's figures, which were 0.6% of the total District population. This District has the 2nd lowest rate in the County and is significantly better than the Kent average.

The three types of offences most frequently committed by children and young people in Sevenoaks were:

- Theft and Handling Stolen Goods (21.6%)
- Violence against the Person (16.6%)
- Criminal damage (16.8%)

The breakdown in offenders by gender continues to show that the majority of offences by young offenders are committed by males.

Not in employment, education or training (NEET)

Using KCC's data for October 2014, the number of young people recorded as NEET in Sevenoaks District has decreased from 89 to 65 compared to same period date last year (a reduction of 26.9%) over a 12 month period. This is the lowest number of NEETs in the County.

Schools

The data provided for bullying incidents across Kent is not consistently recorded so any analysis would be inaccurate. Whilst bullying is undoubtedly an issue for some young people, data is not included in the Assessment due to inconsistent reporting and recording methods.

The Kent Police Safer Schools Officer District posts were ended in May 2014 and a Police Divisional post was set up. PCSOs are now attending primary schools and focusing on e-safety in place of the Safer Schools Officer. Sevenoaks District Council has been visiting schools with partner agencies to deliver e-safety and did an e-safety campaign in February 2014 delivering mouse mats to local schools using a local celebrity and setting up a website.

Priority Action		Lead Agency	Other Partners	By When	Funding
YOUNG PEOPLE					
4.1	Identify repeat behavior in individuals (pre-offending) and work with Troubled Families to provide early intervention	Troubled Families Project	CSU Early intervention	April 2015	Existing Budgets
4.2	Deliver positive relationships programme to help break the cycle of Domestic Abuse. Do an audit of services and identify the gaps	CSU	Schools Youth Clubs 8-12s project	Sept 2015	Existing Budgets
4.3	Audit services in place for young people in the District to identify gaps and plan how to meet them Re-Design and influence KCC Youth Commissioning Service around youth work focusing on local needs	Early Help Commissioned Youth Services Volunteer Sector	All	March 2016	CSP Funding
4.4	Target detached youth work through the CSU	CSU Early Help Kenward Trust	Police Housing Assoc KCC Warden	On-Going	Existing Budgets
4.5	Continued promotion of E-Safety creating a centre for resources	SDC KCC CSU	Commissioned Youth Services Early Help	May 2015	Existing Budgets
4.6	Work with Youth Offending Service on community payback and make good use of the KFRS Youth programme	YOS KFRS	CSU	June 2015	Existing Budgets

Domestic Abuse

Domestic abuse has seen an increase in the number of incidents and the number of repeat victims this year. There have been an additional 120 incidents of domestic abuse recorded within the Sevenoaks District which represents an 18.4% increase on the previous year (April – November 2014). Sevenoaks District has also seen an increase in the number of recorded repeat incidents of domestic abuse with 12.7% more (21 reports, totaling 186).

Whilst on the surface this could reflect a rise in cases of domestic abuse, the increase could also be interpreted positively with more people feeling able to come forward and report domestic abuse to the Police. It is important to remember that these figures are only representative of domestic abuse that was reported to the Police and it is widely recognised that there remains a figure of domestic abuse which remains unreported. Despite the recorded increase within the District, Kent figures for April 2014 to November 2014 rank Sevenoaks as lowest for rates of domestic abuse and repeat domestic abuse victims in the County. Kent police figures indicate the rates of domestic abuse for Sevenoaks District have been the lowest in Kent for the past three years.

Priority Action		Lead Agency	Other Partners	By When	Funding
DOMESTIC ABUSE					
5.1	Raise awareness and sign posting to local and county wide services and resources including refuges, particularly targeting repeat victims	CSP Domestic ASB Group	All Partners KCC Youth Services	On going	Existing Budgets
5.2	Support young people to form positive and healthy relationships (to reduce onset of abusive behaviours and break the cycle of abuse. Promote key messages around domestic abuse prevention and support, linking in with national campaigns and promoting local services	DAVSS DA Working Group	VAWK EARLY HELP	June 2015	Existing Budgets
5.3	Raise awareness of Domestic Abuse in key groups (LGBT, Traveler Groups, Ethnic Minorities)	Domestic Abuse WG	All Partners	March 2016	Existing Budgets
5.4	External Evaluation of DA Services funded by CSP	CSP	DAVSS ISVA Choices CDAP	Sept 2015	Existing Budgets
5.5	Support local services to help victims and perpetrators in the District. Continued promotion of services via media campaigns	CSP	DA Working Group	April 2015	Existing Budgets
5,6	Structured review of Partnership working on Domestic Abuse - identify any gaps and duplications	CSU	DA Working Group	September 2015	Existing Budgets

Substance Misuse

Drugs

Since April 2013, drug offences are no longer recorded in the Victim Based Crime figures released by Kent Police. However, figures collated in I Quanta show total drug offences are down 25.7% (48 offences) with 142 recorded this year (April – November 2014). Sevenoaks has the lowest rate in the County and ranks 1st in Kent.

1 September 2013 – 31 August 2014 there were a total of 270 hospital admissions from 224 individuals for mental and behavioral disorders due to psychoactive substance use (alcohol and drugs) in the District. This is the second lowest figure in Kent.

Alcohol

Until recently, alcohol misuse was measured using alcohol attributable hospital admission rates which have been increasing year on year on a District and County level¹. It is generally felt that these rates no longer accurately reflect alcohol admission trends as some 'attributable' conditions have undergone massive rises in admission rates over recent years and this is only partly attributable to alcohol.

Kent has seen a steady increase of alcohol related hospital admissions over the past ten years and alcohol remains the most common substance for those seeking treatment; this year (June 2012 to May 2013) hospital admissions for evidence of alcohol involvement by Blood Alcohol has seen a Countywide increase of 76 (8.2%). Sevenoaks has seen the sharpest rise in numbers during this period (45.5%, 25 additional residents), making a total of 80 alcohol related hospital admissions this year.

Substance misuse treatment services in Sevenoaks District are provided by CRI, who are commissioned by Kent Public Health to deliver an integrated community drug and alcohol recovery service, offering integrated support to individuals across West Kent. CRI commenced services in West Kent from 1st April 2012.

CRI work closely with a range of partner agencies to improve outcomes for substance misusers. Greensands, a supported housing project in Sevenoaks, is assisted by CRI through the provision of group work and peer support to residents for their substance misuse. A joint working programme has also been developed with Sevenoaks area MIND, to deliver CRI programmes

on a weekly basis to Greensands residents and a bi-weekly drop in and referral service for MIND service users. This will facilitate better access to drug and alcohol services for these clients.

The CSP funds Kenward Trust to deliver low level Substance Misuse Youth Services. Between January and November 2014 they have engaged with over 250 young people, visited over 25 hotspots that have been a community concern and engaged with schools to deliver substance misuse projects

Priority Action		Lead Agency	Other Partners	By When	Funding
SUBSTANCE MISUSE					
6.1	Preventative and early intervention youth work to address identified local needs and improve well-being of young people. Link with other services including Mental Health Services	KCA Substance Misuse TG Kenward Trust	EARLY HELP KCC Youth Services Early Intervention Team	On going	Choosing Health CSP Alternative funding
6.2	Early intervention outreach to be targeted and responsive	Kenward Trust	CSU KCC Youth Services	April 2015	Existing budgets
6.3	Structured interventions around underage drinking and NPS (Legal Highs)	Trading Standards Kenward Trust KCA	CSU	May 2015	Existing Budgets
6.4	Mapping and evaluation of Substance Misuse services	CSU	CRI KCA Kenward Trust	Sept 2015	Existing Budgets
6.5	Investigate "Recovery Community" with the initiative of Dry Bars	Kenwards Trust CSP	All Partners	May 2015	Existing Budgets
6.6	Local response to national campaigns including vulnerable adults, older people and public health campaigns	Substance Misuse Task Group	All Partners	May 2015	Existing Budgets

Handling of Stolen Goods including Shoplifting

Theft and Handling Stolen Goods and Shoplifting have both increased.

Theft and Handling of Stolen goods

Sevenoaks District has seen a slight increase of 1.4%, with 13 more offences recorded compared to same period last year April 2014 – November 2014.

Sevenoaks District still has the 2nd lowest rate per 1000 population in the County. In contrast, the District has the 4th lowest rate in MSG but the crime rate still sits just below average.

Shoplifting

Sevenoaks District has seen an increase in the number of shoplifting offences, April 2014 – November 2014 compared to same period last year of 26.9% 72 offences. Despite this the District ranks 3rd lowest crime rate in the County and 4th best in its MSG.

As with the previous year's strategic assessment, despite the Sevenoaks District's relatively good performance when compared to the rest of Kent, combined theft offences account for the largest proportion of crime in Sevenoaks.

The Sevenoaks District Business Crime Reduction Partnership has struggled to retain business members. Although some new shops in the Town centres have joined the scheme, some of the smaller businesses have pulled out.

Priority Action		Lead Agency	Other Partners	By When	Funding
Handling of Stolen Goods incl SHOPLIFTING					
7.1	Develop email groups to send out bespoke messages for specific themed retailers. Encourage greater ownership of this crime type by shop owners	BCRP	CSU Economic Development	May 2015	Existing resources
7.2	Identify repeat offenders. Share images with CCTV and do more preventative work with shop owners	Police CCTV	CSU BCRP	April 2015	Existing resources
7.3	Publicise arrests through Social Media especially around joint working with the Business Crime reduction Partnership	SDC Police	BCRP CCTV	April 2015	Existing Budgets
7.4	Co-ordinated multi agency operations concerning retail theft and enhance visibility, eg by conducting Safer Plates ops in retail car parks	Police	CSU	April 2015	Existing Budgets
7.5	Work with BCRP to increase board members, businesses and take forward new technology	BCRP	CSU	April 2015	Existing Budgets
7.6	Work with Trading Standards on repeat offenders of Handling of Stolen Goods	Trading Standards	CSU	April 2015	Existing Budgets

Road Safety

Road Traffic Accidents

Throughout Sevenoaks there are major trunk roads e.g. M25/A21 which facilitate the majority of traffic through the District. Unfortunately the figures for major trunk roads and local roads are not available separately.

KCC Highways figures released for July 2013 - June 2014 show a slight increase (1.3%) in RTA casualties in the District compared with the same period the previous year. 553 RTA casualties were recorded during this period and the Sevenoaks District has the fourth highest number of RTA casualties in the County, after Maidstone, Dartford and Swale. 12.6% of all RTA casualties were classified as Killed or Seriously Injured (KSI) with Sevenoaks District also reporting the fourth highest number of KSI RTA casualties in the County.

Road Safety for young people appears to be good in comparison with the rest of the County – Sevenoaks was in the middle of the table ranking joint 6th lowest with Canterbury and Dartford on the number of child casualties recorded in Kent. July 2013 – June 2014 saw 5 casualties aged 16 or under.

Speed Watch

Speeding and perception of speed is a high concern for residents across the District and has featured in all PACT (Partners and Communities Together) Panel's action plans.

Speed Watch training has worked well in the District with residents being trained by Kent Police to monitor the speed of vehicles passing through their community. In November 2014 a total of 43 District locations for Speed Watch had been monitored and over 175 residents had been trained, over a quarter of all volunteers in Kent. Between December 2013 and November 2014, a total of 1096 letters were sent out to the owners of vehicles speeding within the District thanks to the Speed Watch initiative.

Priority Action		Lead Agency	Other Partners	By When	Funding
ROAD SAFETY					
8.1	Identify top 3 speeding sites within the District and work with KCC Highways and Town and Parish Councils to address the problem	KCC Highways Police	SDC	April 2015	Existing Budgets
8.2	Link the top 3 areas with Speed Watch campaign. Increase volunteers in those areas and in 8.1 above use with Police enforcement	CSU Police	Residents	June 2015	Existing Budgets
8.3	Work with young people on speed awareness, before driving	KFRS CSU	All Partners	April 2015	Existing Budgets
8.4	Co-ordinate work in schools. Investigate what work is going on and co-ordinate this with KFRS, Police and KCC Community Wardens	KFRS Police KCC Community Wardens	CSU	Sept 2015	Existing Budgets
8.5	Minimum of 4 Multi-Agency events to address speed enforcement	Police KFRS	CSU All Partners	March 2016	Existing resources
8.6	Education on road safety to be delivered through schools including Pedestrian and Cycle Safety	KFRS Police	CSU	June 2015	Existing resources KFRS

GLOSSARY:

ASB – Anti-Social Behaviour

BCRP – Business Crime Reduction Partnership

CCTV – Closed Circuit Television

CDAP – Community Domestic Abuse Perpetrators Programme

CSP – Community Safety Partnership

CSU – Community Safety Unit

CXK - Connexions

DAVSS – Domestic Abuse Volunteer Support Services

EVA – Environmental Visual Audit

KCC – Kent County Council

KFRS – Kent Fire & Rescue Service

MSG - A Group of Partnerships thought by the Home Office to have similar characteristics and used for benchmarking purposes

NEET – Not in Education, Employment or Training

PACT – Partners and Communities Together

PCC – Police & Crime Commissioner

SDC – Sevenoaks District Council

YOS – Youth Offending Service

Membership of the Community Safety Partnership and contact details

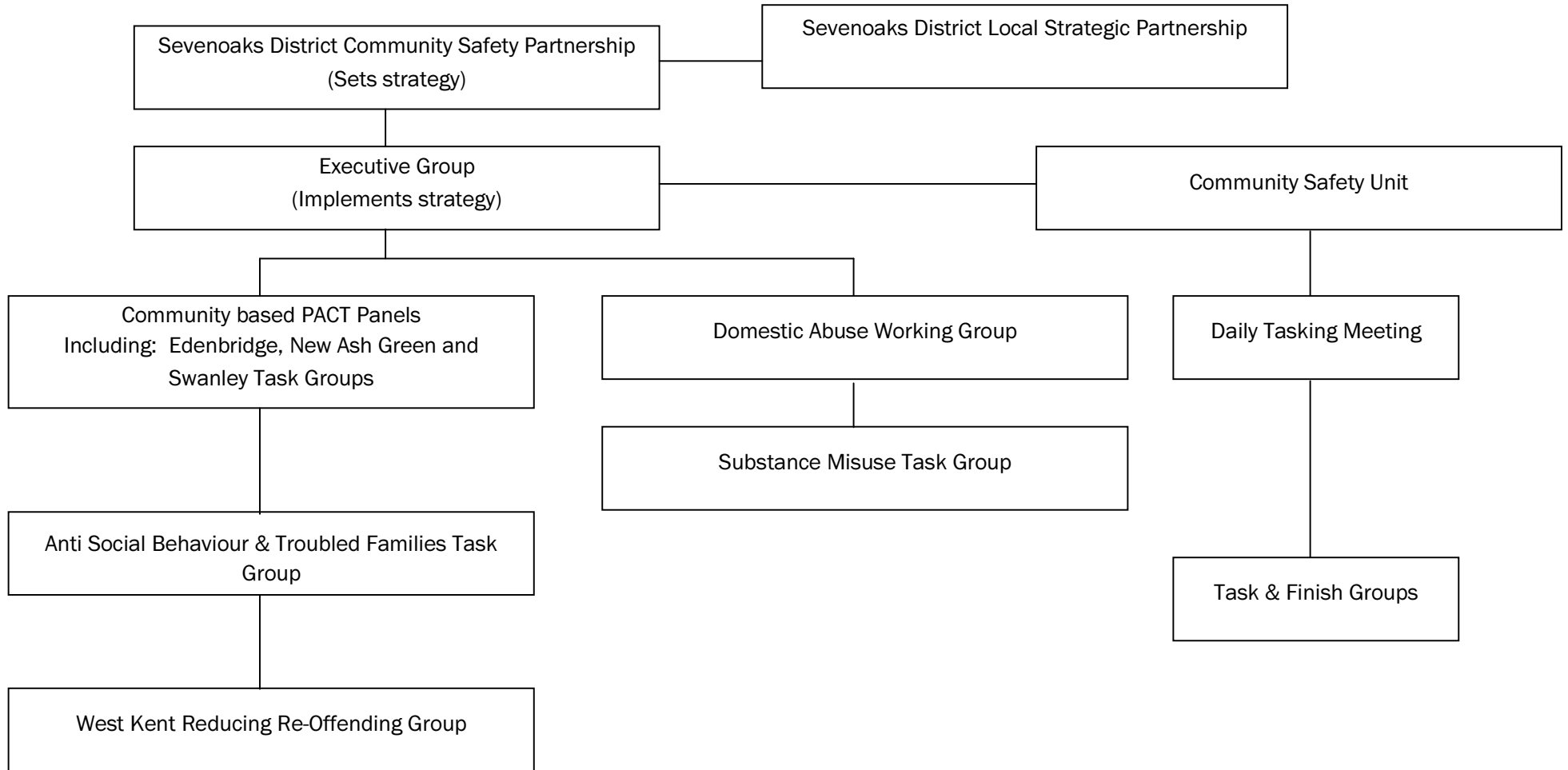
<p>Sevenoaks District Council Argyle Road Sevenoaks Kent TN13 1GP Tel: 01732 227000 Web: www.sevenoaks.gov.uk</p>	<p>Kent Police 1 Pembury Road Tonbridge Kent TN9 2HS Tel:01622 690690 Web: www.kent.police.uk</p>	<p>Kent Fire & Rescue Service West Group HQ Sevenoaks Fire Station London Road, Sevenoaks Tel: 01622 692121 Web: www.kent.fire-uk.org</p>	<p>Police & Crime Commissioner Kent Police Headquarters Sutton Road Maidstone ME15 9BZ Tel: 01622 677055 Web: www.kentpa.kent.police.uk</p>
<p>NHS West Kent CCG Wharf House, Medway Wharf Road Tonbridge Kent TN9 1RE Tel: 01732 375200 Web: www.westkentpct.nhs.uk</p>	<p>Kent Probation Service 17 Garden Road Tunbridge Wells Kent TN1 2XP Tel: 0300 047 3130 Web: www.kentprobation.org</p>	<p>KCC Social Services Worrall House 30 Kings Hill Avenue, Kings Hill, West Malling Tel: 0300 041 1400 Web: www.kent.gov.uk</p>	<p>KCC Children, Families and Education The Willows Hilda May Avenue, Swanley, Kent, BR8 7BT Tel: 0300 041 1400 Web: www.kent.gov.uk</p>
<p>KCC Youth Offending Service Kent County Council Invicta House 2nd Floor Sessions Square Maidstone ME14 1XX Tel: 03000 421407 Web: www.kent.gov.uk</p>	<p>KCC Youth Service Area Youth Officer C/o Swanley Youth Centre St. Mary's Road Swanley Kent BR8 7BU Tel 01322 615275 Web: www.kent.gov.uk</p>	<p>KCC Trading Standards PO Box 286 West Malling Kent ME19 4HW Tel: 03454 040506 Web: www.kent.gov.uk</p>	<p>KCC Community Safety Sessions House County Hall Maidstone ME14 1XQ Tel: 01622 696575 Web: www.kentpartnership.org.uk</p>
<p>West Kent Housing Association 101 London Road Sevenoaks Kent TN13 1AX Tel: 01732 749400 Web: www.westkent.org</p>	<p>Kenward Trust Kenward Road Yalding Maidstone Kent ME18 6AH Tel: 01622 814187 Web: www.kenwardtrust.org.uk</p>	<p>MOAT Homes Galleon Boulevard Crossways Dartford Kent DA2 6QE Tel: 0845 600 1006 Web: www.moat.co.uk</p>	<p>West Kent Extra 101 London Road Sevenoaks Kent TN13 1AX Tel: 01732 749400 Web: www.westkent.org</p>
<p>Voluntary Action Within Kent 19 Monson Road Tunbridge Wells Kent TN1 1LS Tel: 01892 530330 Web: www.vawk.org.uk</p>			

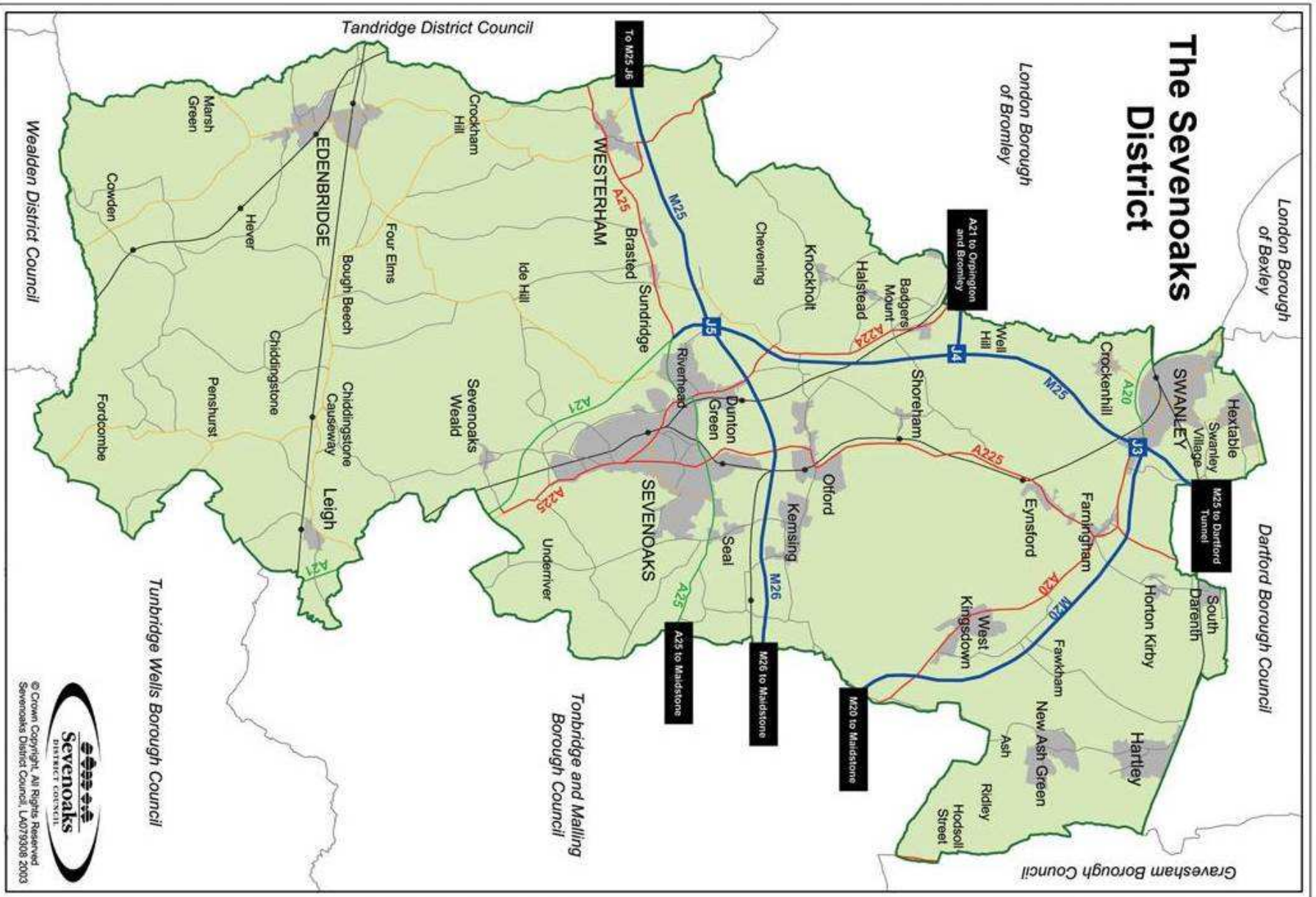
Terms of Reference

The Partnership's terms of reference are to:

- Undertake periodic reviews of community safety in the District and disseminate the findings to the public
- Develop a yearly strategy and action plan to tackle community safety
- Monitor and report progress in meeting the agreed targets and actions
- Secure resources and funding from parent organisations and others for projects to address agreed shared priorities in the Community Safety Action Plan
- Act as a forum for discussion of topical local community safety issues and agree follow up actions if appropriate
- Promote community safety in the District in conjunction with other local organisations and bodies
- Co-ordinate and maintain an overview of all activities relevant to community safety in the District.

Structure of Sevenoaks District Community Safety Partnership





Enquiries to:

Community Safety Manager
Sevenoaks District Council
PO Box 183, Argyle Road
Sevenoaks, Kent TN13 1GP
Telephone 01732 227000
Fax 01732 742339
Minicom 01732 227496
E-mail community.safety@sevenoaks.gov.uk



Housing and Community Safety Advisory Committee Work Plan 2014/15 (as at 13.03 15)

26 March 2015	Summer 2015	Autumn 2015	Winter 2016
<p>Report on Health by Cllr Mrs Cook</p> <p>Older/Vulnerable people update – Cllr Mrs Parkin</p> <p>Joint Working Group with Planning – Cllrs Mrs Parkin/Mrs Ayres</p> <p>Community Safety Strategy & Action Plan 2015-16</p>	<p>HERO Update</p> <p>Review of Disabled Facilities Grant process</p> <p>Dog Fouling</p>	<p>Budget: Service Reviews and Service Change Impact Assessments (SCIAS)</p> <p>Under Occupation Officer - Update</p>	

This page is intentionally left blank